



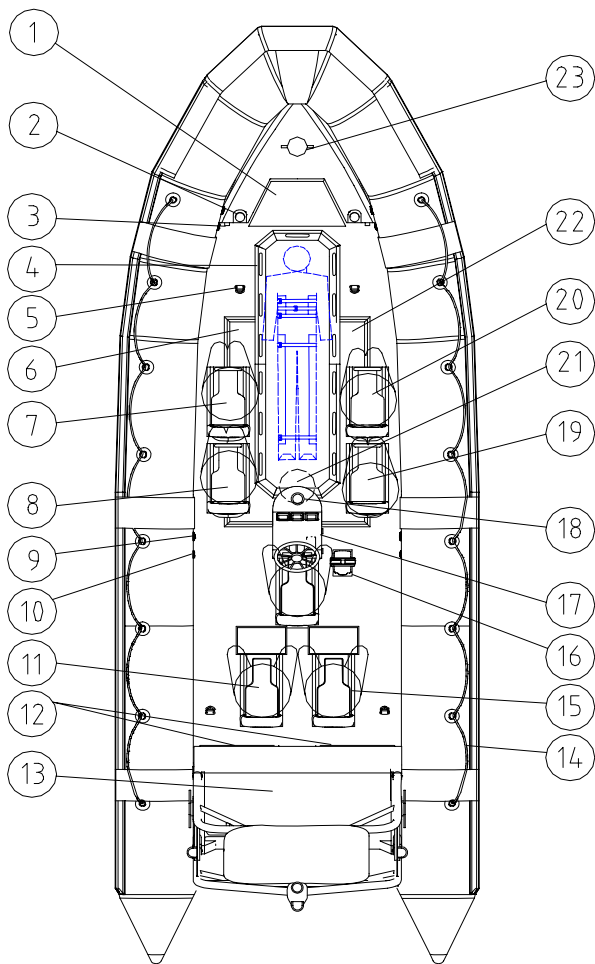
PRICE LIST 2011
RESCUE BOAT S.O.L.A.S

NEW SV 750 RESCUE BOAT S.O.L.A.S.-CE

MODEL SV-750 PU ORANGE WITH:

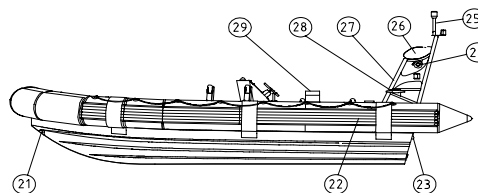
- STRETCHER
- FUEL TANK 300 L.
- S.O.L.A.S. EQUIPMENT
- SEATS FOR PILOT(1) AND CREW(6)
- ROLL BAR AND SELFRIGHTING SYSTEM

45.705,00 €



TECHNICAL CHARACTERISTICS

LENGTH OVERALL	750 CM
BEAM OVERALL	280 CM
MAXIMUM DEPTH	160 CM
MAX. TUBE DIAMETER	59 CM
INDEPENDENT COMPARTMENTS	6+1
MAX. AUTHORIZED No. OF PERSONS	8
MAXIMUM AUTHORIZED PAY LOAD	1.681 KG.
WEIGHT OF BOAT	1.177 KG.
APPROX. WEIGHT AT FULL LOAD	2.858 KG.
MAXIMUM AUTHORIZED ENGINE	2 X 150 HP
SHAFT TYPE	XL
MAXIMUM SPEED AT FULL LOAD	48 KNOTS



MAXIMUM LOAD FOR BOAT

WEIGHT OF THE EQUIPMENT	281 Kg.
WEIGHT OF THE ENGINE	440 Kg.
WEIGHT OF FUEL	300 Kg.
WEIGHT OF CREW	660 Kg.
TOTAL MAXIMUM LOAD	1.681 Kg.

*(THE STANDARD VERSION OF THIS BOAT HAS TO BE FITTED WITH ALL THE DETAILED EQUIPMENT IN ORDER TO COMPLY WITH THE SOLAS REGULATIONS. THE AUTHORISED POWER IS OF 2 ENGINES OF 150 HP EACH WHICH ARE NOT INCLUDED IN THE ABOVE PRICING. THE SEARCHLIGHT 12 V/AH BATTERY IS NOT INCLUDED)
 TAX AND TRANSPORT COST NOT INCLUDED

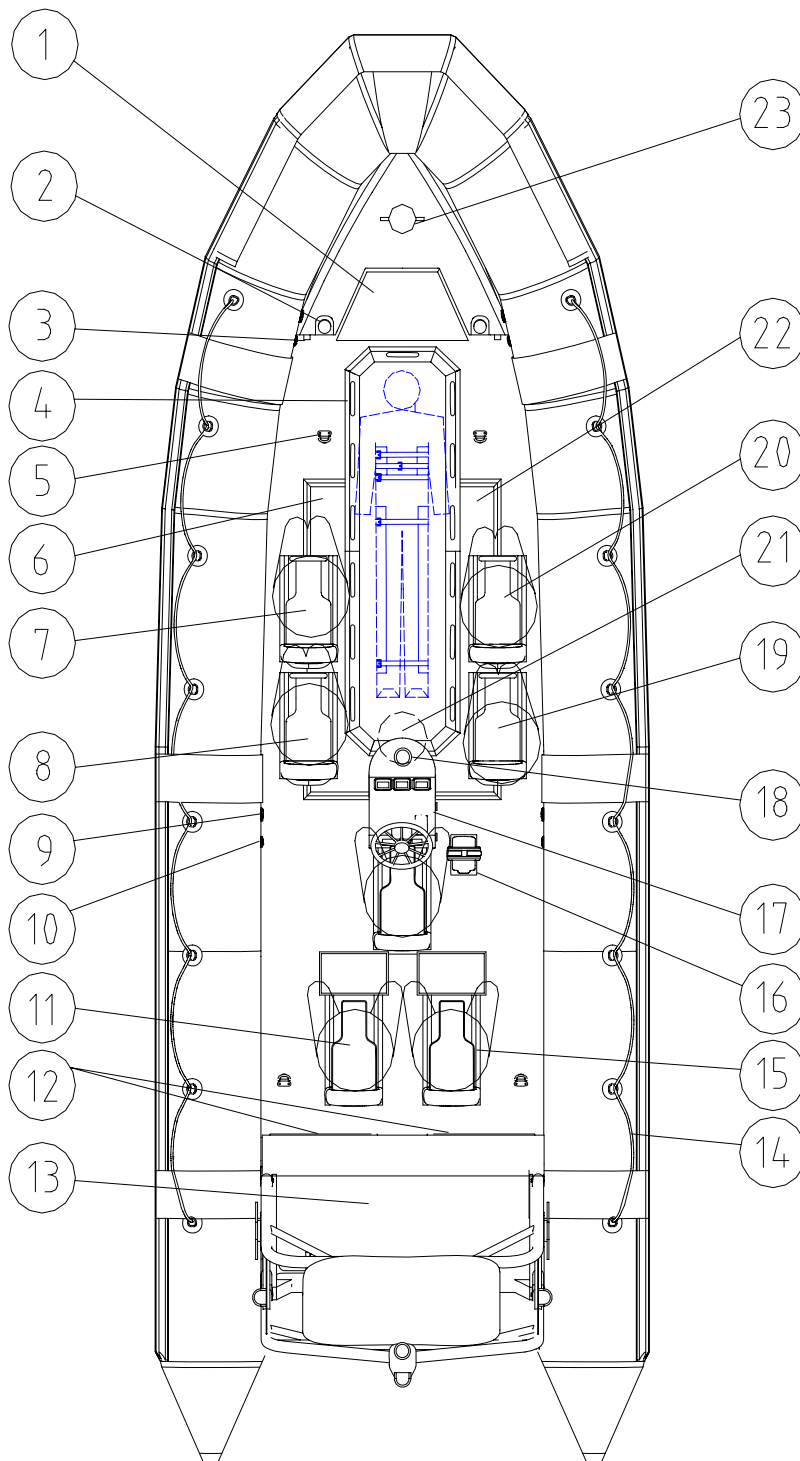
This price list cancels and replaces all previous ones and can be altered without notice at any time.

www.narwhal.es

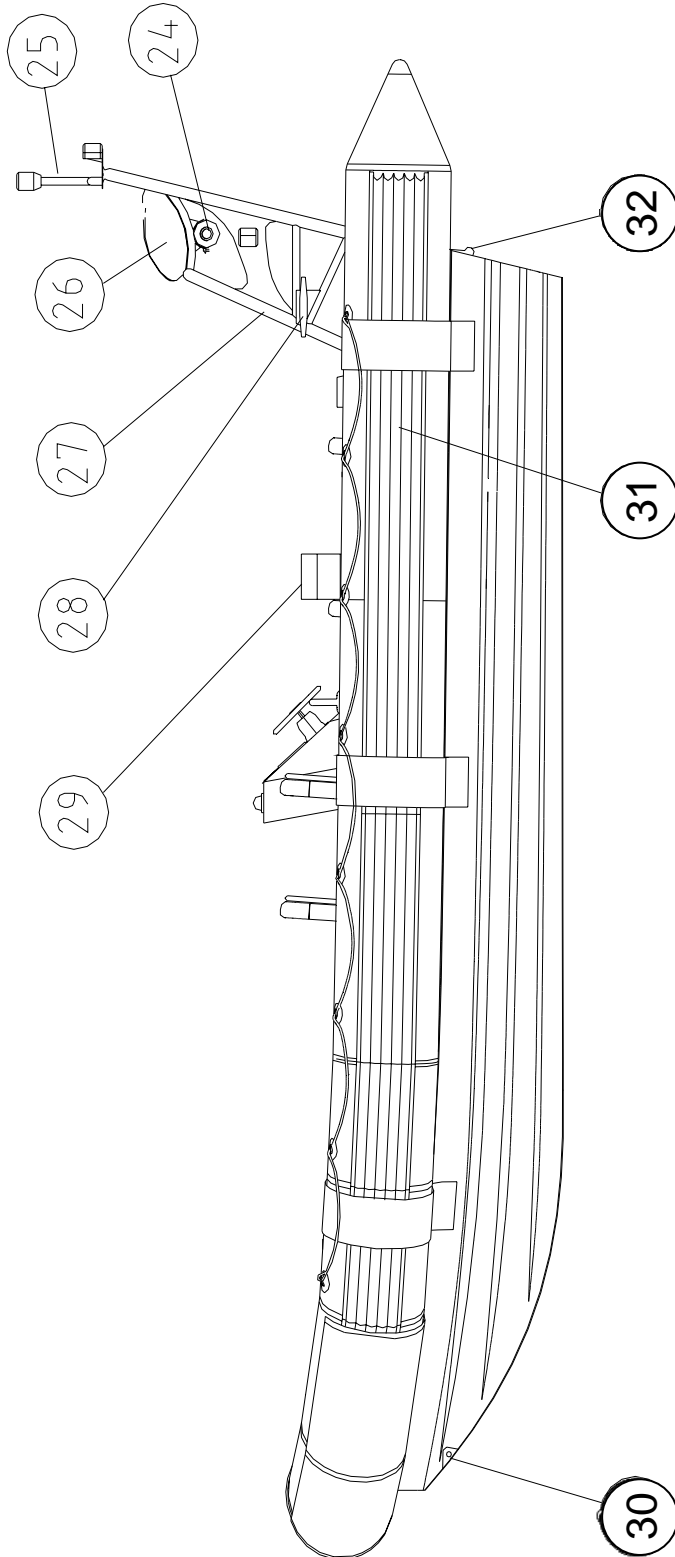
NARWHAL Inflatable Craft - Veigadana 145, Petelos - 36416 Mos-PONTEVEDRA - ESPAÑA
 Tel.: (34) 986 334 124 - Fax: (34) 986 339 527 - E-mail: int.sales@narwhal.es - france@narwhal.es

02. Designs, specifications and boat electrical plan

Model: SV-750 , manufactured by DAYFER, S.L.



Model: SV-750 , manufactured by DAYFER, S.L.



Finishing tube, hull and lockers description

HULL AND TUBE			LOCKERS	
1	LOCKER	1 Und.	PORTABLE EXTINGUISHER	2 Und.
2	FILLING INTAKE	1 Und.	RESCUE NET	1 Und.
3	TANK BREATHER	1 Und.	FLOATING ANCHOR	1 Und.
4	SPACE FOR STRETCHER	1 Und.	BILGE	1 Und.
5	LIFTING RING	1 Und.	REPAIR KIT	1 Und.
6	FUEL TANK LID	1 Und.	TOWING ROPE	1 Und.
7	SEAT JS1	1 Und.	TORCH AND SPARE PARTS	1 Und.
8	SEAT JS1	1 Und.	PUMP TYPE BELLOWS	1 Und.
9	INFLATION/DEFLATION VALVE	5 Und.	FIRST AID KIT	1 Und.
10	PRESSURE RELIEF VALVES	5 Und.	SEARCHLIGHT 12V 50W	1 Und.
11	JOCKEY PASSENGER 1	1 Und.	COMPASS	1 Und.
12	BILGE ACCESS DOOR	2 Und.	THERMAL AID	2 Und.
13	AFT WATER COLLECTOR	1 Und.	KNIFE	2 Und.
14	PERIMETRIC ROPE WITH RINGS	1 Und.	WHISTLE	1 Und.
15	JOCKEY PASSENGER 2	1 Und.	ESPONGE	2 Und.
16	CONTROL TOWER	1 Und.	FLOATING LIFEBOUY	1 Und.
17	JOCKEY PILOT	1 Und.	8 mm OF 30m. FLOATING ROPE	1 Und.
18	COMPASS	1 Und.	12 mm OF 10m. POLYESTER ROPE	2 Und.
19	SEAT JS1	1 Und.	FLUORESCCEIN	1 Und.
20	SEAT JS1	1 Und.	BOAT COVERS	2 Und.
21	TOWING RINGS AT BOW	1 Und.	LIFTING SLINGS	1 Und.
22	REINFORCED RUBBING STRAKE FENDER	1 Und.	STRETCHERS AND FLOATING SYSTEM	2 Und.
23	CO2 SYSTEM HANDLE	1 Und.		
24	CO2 CYLINDER	1 Und.		
25	STOP LIGHT	2 Und.		
26	SELF RIGHTING BAG SYSTEM	1 Und.		
27	ROLL BAR	1 Und.		
28	TOWING CLEATS	2 Und.		
29	TIGHT CAPSULES	2 Und.		
30	SAMSOM CLEAT (OPTIONAL)	1 Und.		
31	FUEL TANK	1 Und.		
32	TANK ACCESS REGISTRATION	1 Und.		

